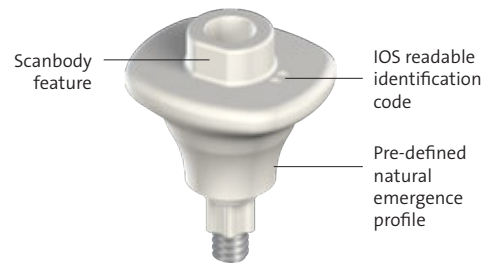


# Straumann® Anatomic Healing Abutment XC (AHA)

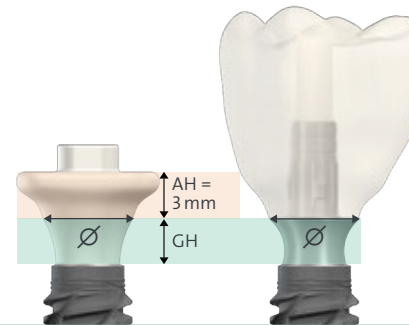
## QUICK GUIDE

Off the shelf AHA has pre-defined anatomic emergence profile with integrated scanbody.



- Eliminates the need to use separate healing abutment, impression post or scanbody
- Reduces multiple dis-/reconnection of prosthetic components, minimizes the disruption of peri-implant tissue during healing phase
- IOS readable identification code represents the type of AHA used, they are visible in stl. lab files

Natural emergence profile keeps adequate gingival opening, preventing gingiva interfering with the restoration seating.



- AHA follows the consistent emergence profile of the final abutment and crown.
- GH and  $\varnothing$  correspond to the dimensions of final abutment.
- All AHAs have the standard abutment height (AH) of 3 mm.

## CLINICAL WORKFLOW

1

Planning

**Opt. A:** Gingiva measurement with traditional tools and the choice of AHA size in chairside.

**Opt. B:** AHA can be a part of pre-operative planning by using digital planning software with AHA library.

2

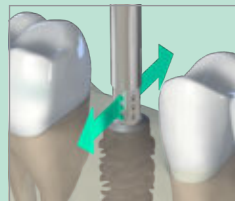
Placing

**Implant placement:** Orientation dots on the implant driver must be aligned buccal-lingual.

**AHA placement:** Insert the AHA and pre-assembled self-retaining screw with SCS Screwdriver.

Hand tighten (i.e. 14Ncm) the AHA. Flat scanbody feature on AHA must be aligned in buccal orientation.

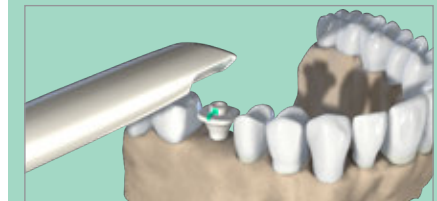
The screw head should be closed with absorbent cotton or gutta-percha and a sealing compound (e.g. composite restorative material).



3

Scanning

Ensure that AHA is cleaned completely, and no visual defects are observed on the scanbody feature. AHA libraries in design software includes the emergence profile, **additional gingiva scan is not necessary in IOS protocols.**

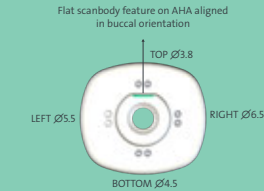


Scanbody part of AHA represents the position and orientation of the respective dental implant in CAD/CAM scanning procedures. Scan files using AHA can be used in CARES® Visual, 3shape and exocad systems – the most current libraries for Straumann® centralized and in-house prosthetics can be found in Straumann Download Center.



The identifier code on the occlusal surface of the AHA can be visualized in stl files to transfer the information about gingiva height (GH) and platform diameter (∅) used.

- Number of dots represent GH of the AHA used (i.e. 1 dot: GH1.5, 2 dots: GH2.5).
- Place of dots on the occlusal surface of the AHA represent ∅.



Shape	S	S1	M	XL		
∅ and Platform	∅ 3.8 mm RB/WB	∅ 3.8 mm RB/WB	∅ 3.8 mm RB/WB	∅ 4.5 mm RB/WB	∅ 5.5 mm WB	∅ 6.5 mm WB
GH 1.5 mm						
GH 2.5 mm						

AHA emergence profile (red contour below) can be visualized in the design software to assist the CAD/CAM designer.



Manufacture of the definitive final restoration.

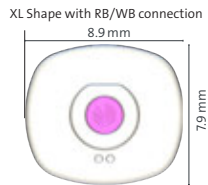
**In-house:** Use Variobase for a ti-base restoration or pre-milled abutment blanks (PMAB) to create custom abutments in house

**Central:** Outsource manufacturing or design and manufacturing of custom abutments to Straumann UNIQ service.

\*Please ask your local Straumann representative for the local availability of UNIQ Custom Abutments services.

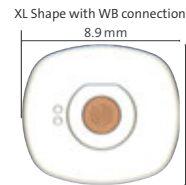
4 shapes designed according to typical tooth shapes in specific areas of the dentition.

Molar



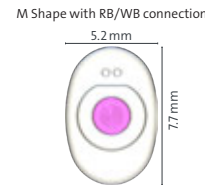
	XL Shape RB/WB Anatomic Healing Abutment
∅4.5	
GH 1.5 mm	
∅4.5	
GH 2.5 mm	

Molar



	XL Shape WB Anatomic Healing Abutment
∅5.5	
GH 1.5 mm	
∅5.5	
GH 2.5 mm	

Premolar



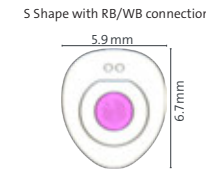
	M Shape RB/WB Anatomic Healing Abutment
∅3.8	
GH 1.5 mm	
∅3.8	
GH 2.5 mm	

Lateral upper, Lower incisor



	S1 Shape RB/WB Anatomic Healing Abutment
∅3.8	
GH 1.5 mm	
∅3.8	
GH 2.5 mm	

Central incisor



	S Shape RB/WB Anatomic Healing Abutment
∅3.8	
GH 1.5 mm	
∅3.8	
GH 2.5 mm	

International Headquarters

Institut Straumann AG  
 Peter Merian-Weg 12  
 CH-4002 Basel, Switzerland  
 Phone +41 (0)61 965 11 11  
 Fax +41 (0)61 965 11 01  
 www.straumann.com

© Institut Straumann AG, 2024. All rights reserved.

Straumann® and/or other trademarks and logos from Straumann® mentioned herein are the trademarks or registered trademarks of Straumann Holding AG and/or its affiliates.